

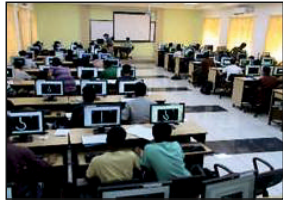
Laboratory Facilities



Wind Turbine Trainer



Journal Bearing Test Rig



CAD Lab



Heat Transfer through Packed Bed



Thermal Lab



Wire EDM



Rheometer



CNC Turning and Milling



3D Printer



Scratch Tester

MoU with Industries/Organisations

- Rimtex Engg. Pvt. Ltd.
- Ingersoll Rand Technologies and Services Pvt. Ltd.
- WIPRO GE Healthcare Pvt. Ltd.
- SIGNET Group of Industries
- Maini Group of Industries
- Minar Hydrosystems Pvt. Ltd.
- IIT Jammu
- CIPLA (Work Integrating Learning)
- Intel Unnati (AI/ML Lab @ Mech. Dept.)

Department Video




Program Details



Contact Details

Dr. Arunachala U Chandavar
Professor & Head

Department of Mechanical & Industrial Engineering
MIT, Manipal - 576104

 +91-820-2925461

 arun.chandavar@manipal.edu

APPLY NOW



MANIPAL INSTITUTE OF TECHNOLOGY

MANIPAL

(A constituent unit of MAHE, Manipal)



INFORMATION
BROCHURE

Department of Mechanical and Industrial Engineering

M.Tech. Programs

- > **Mechanical Engineering**
(Computer Aided Analysis & Design)
- > **Mechanical Engineering**
(Manufacturing Technology & Automation)
- > **Mechanical Engineering**
(Thermal Sciences & Energy Systems)

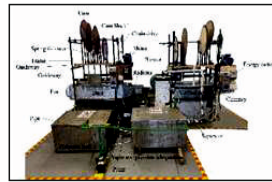
Program highlights

- Programs Accredited by NBA and IET - UK (An international accreditation body)
- One year classroom teaching + one year internship/project
- Senior faculty with research experience
- High end computational facility and full-fledged central library
- Well-equipped laboratories
- Widespread program and open electives
- Reputed Journal Subscription facility
- Research mentorship scheme
- Intel Unnati Certification in AI/ML facility
- Scope for multidisciplinary projects
- Field visits/guest lectures
- 60 + student clubs/dedicated placement/ Manipal Universal Technology Business Incubator

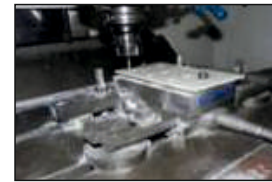
MAHE scholarships and Support

- 20% waiver of the Course fee for the candidates admitted to the program under the GENERAL category
- Integrated Ph.D. with scholarship in M.Tech. 2nd year for eligible candidates
- Teaching Assistantship with stipend for eligible students
- GATE scholarship for students with valid GATE score
- Seed money for research
- Financial support for conference and journal publications.
- Opportunities for research incentives
- Start-up and Incubation support

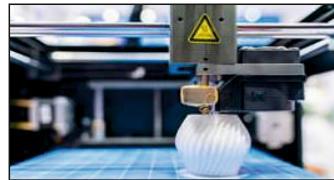
Core Competencies



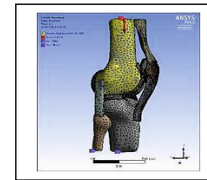
Liquid Desiccant Dehumidification System



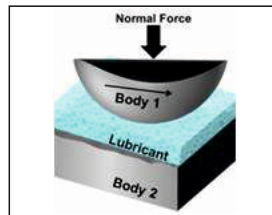
Machining of Composites



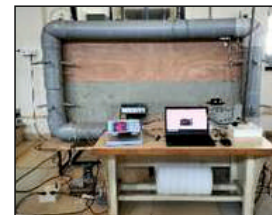
Additive Manufacturing



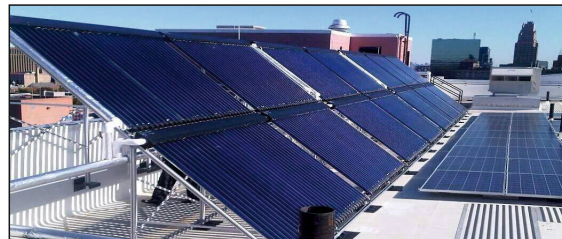
FEA in Biomechanics & Mechanical Design



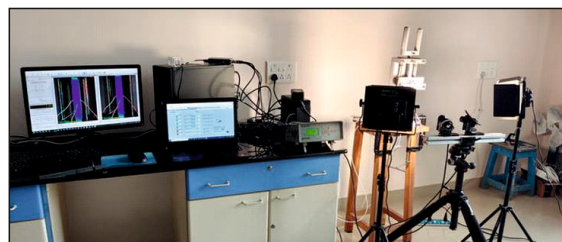
Tribology



Natural Circulation Loop



Solar Thermal Systems



Digital Image correlation

Major recruitment and internship companies



- On campus placement
- International student exchange facility