



MANIPAL COLLEGE OF PHARMACEUTICAL SCIENCES

MANIPAL

(A constituent institution of MAHE, Manipal)

Department of Pharmacognosy

Guest Lecture pictures



""Identification & Characterization of Phytoconstituents in Herbal extracts"" By Dr Vineet Kumar Singh, Senior Manager – Phytochemistry (R&D), Natural Remedies Pvt Ltd. Bengaluru India.



Identification & Characterization of Phytoconstituents in Herbal extracts

Presented by :
Dr.Vineet Kumar Singh Ph.D.
Department of Phytochemistry, R&D
Natural Remedies Pvt Ltd.,
Bangalore



NRPL

Herbal Animal Health Products (AHP) Division

❖ The leader in AHP market in India

Herbal Human Product Division

- ❖ Standardized herbal extracts
- ❖ Clinically validated herbal products
- ❖ Phytocompounds



BacoMind®

Kalmcold™

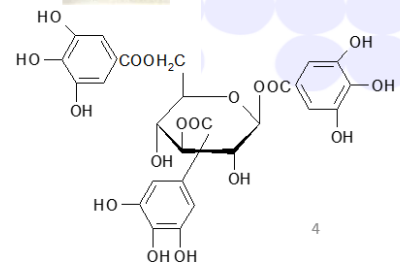
Gutgard™

OciBest®

2

Major activities of Phytochemistry department

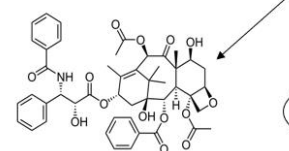
- Development and Standardization of extraction procedures for herbs
- Isolation and Characterization of phytochemical reference substances (markers/ active marker)
- Bio-activity guided fractionation- Identification of active constituents in the extract



4



Chemicals, Biologics and Botanicals



Biotechnology products
Proteins, Peptides, Hormones



98-100%
chemistry known

2 to 40%
chemistry known

Typically, single
chemical entities

Complex mixtures (typically >1000)
Primary metabolites (Ex: polysaccharides)
Secondary metabolites (Ex: Flavonoids)

Different challenges

Different challenges

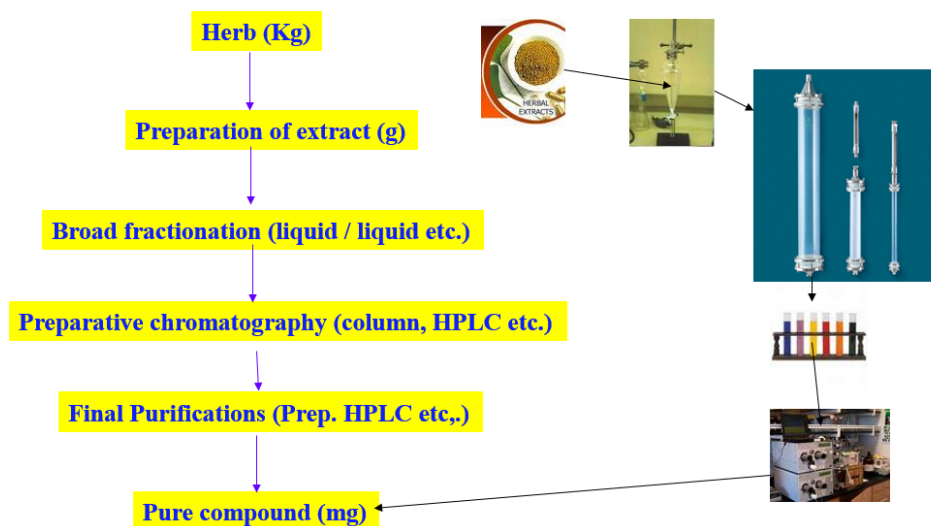


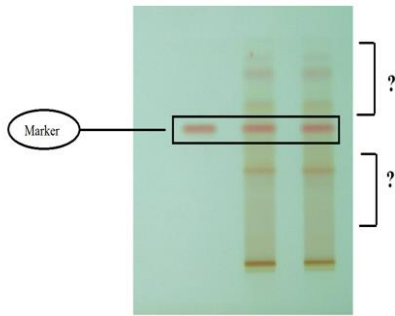
5

General scheme of Isolation of phytoconstituents

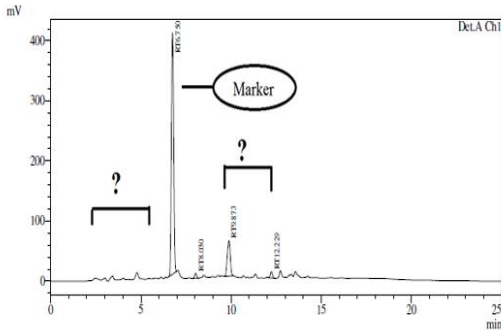
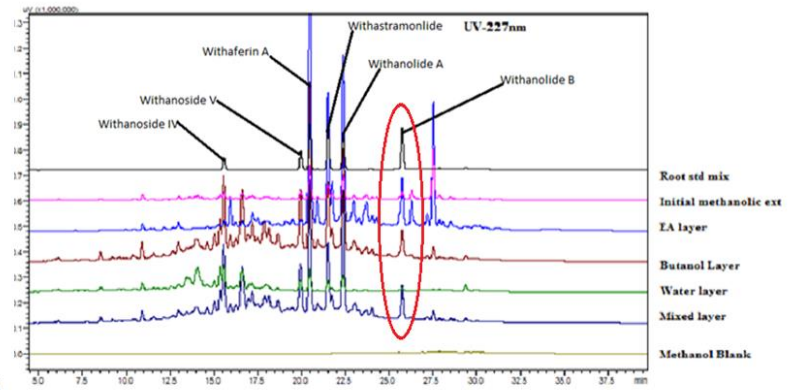
Steps involved in generation
of reference standards

- Isolation of phytoconstituents
- Structure determination / confirmation
- Chromatographic purity determination
- Certificate of analysis



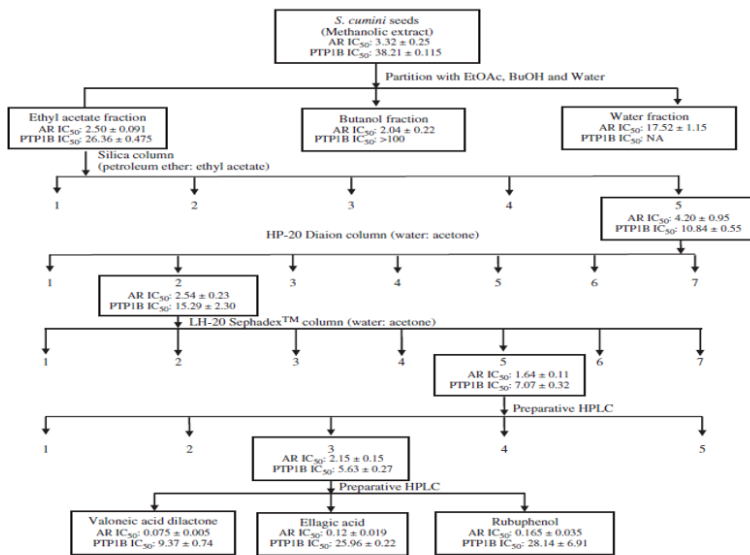


TLC profile of fractions



HPLC profile of fractions

Bioactivity Guided Fractionation of *Syzygium cumini* seeds



*All IC₅₀ values are expressed as µg/mL.



Reference:- Laxman Sawant *et al.*, "Aldose reductase and protein tyrosine phosphatase 1B inhibitory active compounds from *Syzygium cumini* seeds" *Pharm Biol*, 2015; 53(8): 1176–1182.

HPLC Fingerprint of *Withania somnifera* commercial extracts

